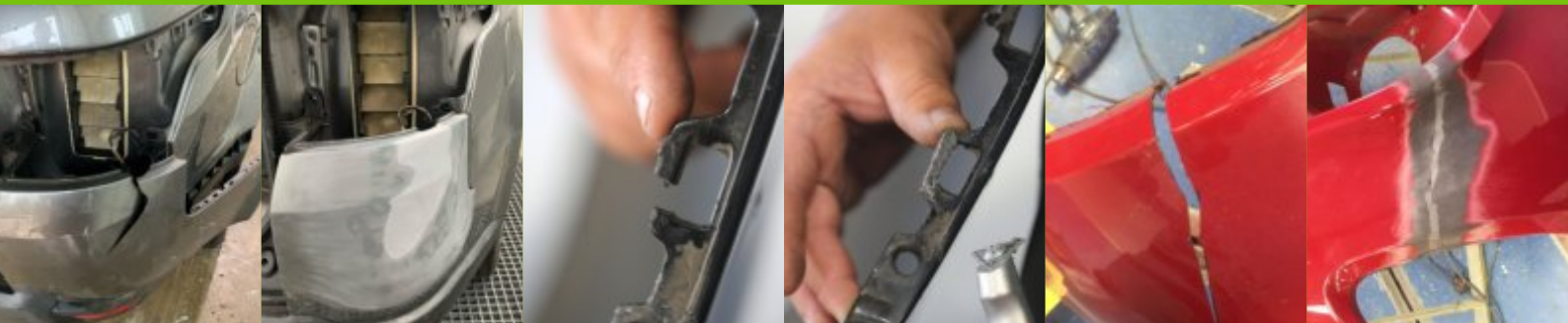




Transform Your Workshop with Smarter, Greener, Superior Repair Technology

At Eco Repair Systems, we've been proudly serving the motor vehicle repair industry for over 30 years. Our advanced tools are designed to help bodyshops repair more, replace less, and make a positive impact on the planet—all while boosting efficiency and profitability.

By combining cutting-edge technology with eco-conscious innovation, we're empowering forward-thinking workshops to deliver high-quality repairs that are better for their business and the environment.



Ready to Take Your Workshop to the Next Level?

Discover how our innovative tools can revolutionise your repair process. To learn more or arrange a demonstration, call us today at 020 3649 9371 or visit ecorepairsystems.co.uk.

Our Top Products—Designed to Revolutionise Your Repairs

From innovative plastic welding systems to cutting-edge dent-pulling technology, our equipment is engineered to help you replace less, repair more, and maximise workshop efficiency. Here are just some of our flagship solutions.

Plastic Fusion Pro Advanced Station

Plastic repairs are a cornerstone of modern vehicle bodywork, and the Plastic Fusion Pro Advanced Station is engineered to make these repairs stronger, cleaner, and more efficient.

- Nitrogen welding technology ensures welds are contamination-free and exceptionally durable, with no toxic fumes or smoke.
- Perfect for repairing bumpers, grilles, headlamp housings, wing mirrors, and more.
- Easy-to-use, compact design ensures consistent, high-quality results for a wide range of repairs.

What's Included:

This all-in-one system features a built-in nitrogen generator and hot stapler. The kit comes with trolley, scraper, universal weld strips, and a selection of staples. Everything you need to perform professional-grade plastic repairs with ease.



Slimliner Steel Panel Repair

The Slimliner Steel Panel Repair System delivers precision and efficiency, making steel panel repairs easier than ever. The Slimliner is specifically designed to keep the repair area small, meaning the repair is easier to manage.

- Minimized heat transfer for a cleaner, more precise repair process.
- Touchscreen-controlled Digispot welder and the fast-speed Innopuller, deliver unmatched speed and accuracy.
- Designed for small to medium panel repairs, it's the perfect solution for workshops of any size.

Why Slimliner?

With the Slimliner, you can reduce costs by repairing rather than replacing panels while boosting your bottom line by selling more labour hours. This compact workstation includes everything needed for professional repairs, from a Speedpuller and Dentliner to pulling bars, hammers, and an 8-metre cable.





Alu Slimliner Panel Repair

For aluminium panel repairs, the Alu Slimliner offers unparalleled convenience and quality. With aluminium becoming a more common material in vehicle manufacturing, this system ensures your workshop is equipped to handle the challenge.

- Stud repair techniques ensure accurate and durable results, restoring panels with precision and reliability.
- Aluminium-specific technology ensures reduced heat usage, preventing warping and delivering superior results.
- Repairs are durable and cost-effective—ideal for saving insurance companies and customers money.

What's Included:

The Alu Slimliner comes fully equipped on a trolley with an Alument Welder, Dentliner bridge, glue-pull kit, pulling bars, pull elements and specialised panel hammers, providing a complete solution for high-quality aluminium repairs.

Eco Power Liner

The Eco Powerliner redefines dent pulling with its innovative and versatile design, making heavy-duty repairs faster and easier than ever.

- A mobile, floor-suction tower capable of pulling up to 400kg with as little as 4 bar pressure.
- Effortlessly repairs dents on steel, aluminium, and glue-based repairs with exceptional precision.
- Compact and manoeuvrable, it fits seamlessly into any workshop setup, even in tight spaces.

Why Eco Powerliner?

This cutting-edge tool eliminates the need for traditional pull bars, streamlining your repair process. Its detachable claw attachment adds even greater versatility, making it a must-have for any modern body shop.



Explore More with Eco Repair Systems

These flagship products are just the beginning. From dent repair to panel welding, our full range of advanced tools is designed to take your workshop to the next level.

Want to learn more or arrange a live demonstration?

Visit ecorepairsystems.co.uk or call us at 020 3649 9371 to discover how we can transform your repair process.

Say YES to Smarter, Greener and More Profitable Repairs!

We're leading the way in vehicle body repair by delivering solutions that are smarter, greener, and better.

Our tools are designed to reduce waste, save time, and help you build a more sustainable future—without compromising on repair quality.



Why Choose Eco Repair Systems?

We don't just provide tools—we provide a way forward for workshops looking to do more with less. Our specialised technology is designed to add value to your business, enabling you to:

- **Achieve faster, higher-quality repairs:** Our systems are built to handle steel, aluminium, and plastic repairs with precision and efficiency, helping you maintain consistently high standards of workmanship.
- **Maximise profitability:** Increase the speed and profitability of your current workflow while reducing waste. Our equipment empowers you to sell more labour hours, attract new customers, and be recognised as the best repairer in town.
- **Deliver benefits across the repair chain:** From lower key-to-key times to more cost-effective repairs, everyone benefits—from work providers to direct customers—ensuring higher referral rates and repeat business for your bodyshop.
- **We support you every step of the way:** We train your technicians to master our tools for fast and carry out high-quality repairs. We also provide a fast and efficient consumables ordering service. We do everything we can to ensure your workshop runs smoothly and efficiently.

Our steel and aluminium panel repair systems are approved and recommended by many manufacturers including BMW, MINI, and Rolls Royce. This is a testament to the exceptional quality and reliability of our tools.



Don't Just Take Our Word for It - See the Results Yourself!

Unlock the full potential of your workshop with our advanced tools.
Call 020 3649 9371 to book a free demonstration or visit ecorepairsystems.co.uk today.